

**CURRENT STATUS OF RURAL ELECTRIFICATION AND ELECTRICITY SERVICE
DELIVERY IN RURAL AREAS OF ORISSA**

I. Status of Village Electrification in Orissa:

As on 31st August 2013, 10029 villages were yet to be electrified in the state of Orissa, out of a total of 47529 villages in the state, as per the 2001 census.

Table 1: Status of Village Electrification in Orissa¹

States/UTs	Total inhabited Villages as per 2001 census	Villages electrified as on 31/03/2013 as per new definition (Provisional)		Cummulative achievement as on 31/08/2013 as per new definition	%age of villages electrified as on 31/08/2013	Unelectrified villages as on 31/08/2013 (V)
		No.	%			
Orissa	47529	37500	78.9	37500	78.9	10029

Source: Central Electricity Authority, 31.08.2013

Therefore the total number of electrified villages in Orissa accounts to 78.9 percent.

The following table gives the status of electrification of the villages district and block-wise which are covered under Rajiv Gandhi Grameen Vidyutikaran Yojana (RGGVY) scheme.

Table 2: District and respective block-wise status of Village Electrification in Orissa

District	Block	No. of Villages covered under RGGVY	No. of Electrified Villages (RGGVY)	% Villages Electrified	No. of Unelectrified Villages	% Unelectrified Villages	
Anugul	Anugul	220	128	58.2	92	41.8	
	Athmallik	297	263	88.6	34	11.4	
	Banarpal	136	40	29.4	96	70.6	
	Chhendipada	173	122	70.5	51	29.5	
	Kaniha	186	117	62.9	69	37.1	
	Kishorenagar	229	194	84.7	35	15.3	
	Palalahada	272	240	88.2	32	11.8	
	Talcher	137	78	56.9	59	43.1	
	TOTAL OF ALL BLOCKS		1650	1182	71.6	468	28.4
	Balangir	Agalpur	102	80	78.4	22	21.6
Balangir		122	89	73.0	33	27.0	
Bangomunda		133	94	70.7	39	29.3	
Belapara		119	81	68.1	38	31.9	
Deogaon		127	58	45.7	69	54.3	
Khaprakhol		132	93	70.5	39	29.5	
Loisinga		107	67	62.6	40	37.4	
Muribahal		157	111	70.7	46	29.3	
Patnagarh		164	102	62.2	62	37.8	
Puintala		134	111	82.8	23	17.2	
Saintala		137	91	66.4	46	33.6	
Tentulikhunti (Gudvella)		92	68	73.9	24	26.1	
Titlagarh		130	85	65.4	45	34.6	
Turekela	108	82	75.9	26	24.1		
TOTAL OF ALL BLOCKS		1764	1212	68.7	552	31.3	
Baleshwar	Bahanaga	158	157	99.4	1	0.6	

¹ CEA Monthly Report available at http://www.cea.nic.in/reports/monthly/dpd_div_rep/village_electrification.pdf

District	Block	No. of Villages covered under RGGVY	No. of Electrified Villages (RGGVY)	% Villages Electrified	No. of Unelectrified Villages	% Unelectrified Villages
	Baleswar Sadar	247	245	99.2	2	0.8
	Baliapal	189	187	98.9	2	1.1
	Basta	295	292	99.0	3	1.0
	Bhograi	319	308	96.6	11	3.4
	Jaleswar	205	190	92.7	15	7.3
	Khaira	338	334	98.8	4	1.2
	Nilagiri	136	136	100.0	0	0.0
	Oupada	156	156	100.0	0	0.0
	Remuna	228	228	100.0	0	0.0
	Similia	155	153	98.7	2	1.3
	Soro	157	156	99.4	1	0.6
	TOTAL OF ALL BLOCKS	2583	2542	98.4	41	1.6
Bargarh	Ambabhona	109	63	57.8	46	42.2
	Attabira	77	33	42.9	44	57.1
	Barapali	74	33	44.6	41	55.4
	Bargarh	61	16	26.2	45	73.8
	Bhatli	83	41	49.4	42	50.6
	Bheden	96	42	43.8	54	56.3
	Bijepur	109	62	56.9	47	43.1
	Gaisilet	102	37	36.3	65	63.7
	Jharbandha	80	31	38.8	49	61.3
	Paikamal	124	59	47.6	65	52.4
	Rajbarasambar	141	74	52.5	67	47.5
	Sohela	129	43	33.3	86	66.7
	TOTAL OF ALL BLOCKS	1185	534	45.1	651	54.9
Baudh	Baudh	382	260	68.1	122	31.9
	Harbhanga	340	176	51.8	164	48.2
	Kantamal	391	308	78.8	83	21.2
	TOTAL OF ALL BLOCKS	1113	744	66.8	369	33.2
Bhadrak	Bant	195	195	100.0	0	0.0
	Basudebpur	172	172	100.0	0	0.0
	Bhadrak	146	146	100.0	0	0.0
	Bhandari Pokhari	160	154	96.3	6	3.8
	Chandabali	270	269	99.6	1	0.4
	Dhamanagar	136	136	100.0	0	0.0
	Tihidi	149	149	100.0	0	0.0
	TOTAL OF ALL BLOCKS	1228	1221	99.4	7	0.6
Cuttack	Athagad	185	164	88.6	21	11.4
	Badamba	134	121	90.3	13	9.7
	Banki	102	97	95.1	5	4.9
	Banki-Dampara	43	40	93.0	3	7.0
	Barang	75	67	89.3	8	10.7
	Cuttack Sadar	115	114	99.1	1	0.9
	Kantapada	88	85	96.6	3	3.4
	Mahanga	191	189	99.0	2	1.0
	Narasinghpur	227	177	78.0	50	22.0
	Niali	124	122	98.4	2	1.6
	Nischintakoili	215	213	99.1	2	0.9
	Salepur	162	157	96.9	5	3.1
	Tangi-Choudwar	146	125	85.6	21	14.4
	Tigiria	47	41	87.2	6	12.8
	TOTAL OF ALL BLOCKS	1854	1712	92.3	142	7.7
Debagarh	Barkot	220	194	88.2	26	11.8
	Reamal	268	252	94.0	16	6.0
	Tileibani	195	178	91.3	17	8.7
	TOTAL OF ALL BLOCKS	683	624	91.4	59	8.6
Dhenkanal	Bhuban	103	87	84.5	16	15.5
	Gandia	166	119	71.7	47	28.3
	Hindol	176	99	56.3	77	43.8
	Kamakshyanagar	129	113	87.6	16	12.4
	Kankadahad	120	96	80.0	24	20.0

District	Block	No. of Villages covered under RGGVY	No. of Electrified Villages (RGGVY)	% Villages Electrified	No. of Unelectrified Villages	% Unelectrified Villages
	Odapada	126	69	54.8	57	45.2
	Parajang	96	79	82.3	17	17.7
	Sadar	147	114	77.6	33	22.4
	TOTAL OF ALL BLOCKS	1063	776	73.0	287	27.0
Gajapati	Guma	207	198	95.7	9	4.3
	Kashinagara	87	84	96.6	3	3.4
	Mohana	476	394	82.8	82	17.2
	Nuagada	178	158	88.8	20	11.2
	Parlakhemundi (Gosani)	120	113	94.2	7	5.8
	R. Udaygiri	230	163	70.9	67	29.1
	Rayagada	212	199	93.9	13	6.1
	TOTAL OF ALL BLOCKS	1510	1309	86.7	201	13.3
Ganjam	Asika	109	96	88.1	13	11.9
	Beguniapada	182	87	47.8	95	52.2
	Bellanguntha	90	40	44.4	50	55.6
	Bhanjanagar	144	74	51.4	70	48.6
	Buguda	99	76	76.8	23	23.2
	Chhatrapur	80	42	52.5	38	47.5
	Chikiti	124	76	61.3	48	38.7
	Dharakote	201	123	61.2	78	38.8
	Digapahandi	204	149	73.0	55	27.0
	Ganjam	114	54	47.4	60	52.6
	Hinjilicut	52	45	86.5	7	13.5
	Jagannathprasad	149	94	63.1	55	36.9
	Kavisurjanagar	74	69	93.2	5	6.8
	Khalikote	226	101	44.7	125	55.3
	Kukudakhandi	89	72	80.9	17	19.1
	Patrapur	298	137	46.0	161	54.0
	Polasara	138	106	76.8	32	23.2
	Purusottampur	97	77	79.4	20	20.6
	Rangeilunda	79	23	29.1	56	70.9
	Sanakhemundi	142	73	51.4	69	48.6
	Seragad	108	83	76.9	25	23.1
	Surada	283	170	60.1	113	39.9
	TOTAL OF ALL BLOCKS	3082	1867	60.6	1215	39.4
Jagatsinghapur	Balikuda	224	218	97.3	6	2.7
	Biridi	79	77	97.5	2	2.5
	Ersama	195	181	92.8	14	7.2
	Jagatsinghapur (P)	161	160	99.4	1	0.6
	Kujang	158	118	74.7	40	25.3
	Naugaon	87	87	100.0	0	0.0
	Raghunathpur	79	78	98.7	1	1.3
	Tirtol	242	221	91.3	21	8.7
	TOTAL OF ALL BLOCKS	1225	1140	93.1	85	6.9
Jajapur	Badachana	200	184	92.0	16	8.0
	Bari	96	96	100.0	0	0.0
	Binjharpur	107	106	99.1	1	0.9
	Danagadi	104	99	95.2	5	4.8
	Dasarathpur	150	149	99.3	1	0.7
	Dharmasala	247	233	94.3	14	5.7
	Jajapur	180	176	97.8	4	2.2
	Korai	217	213	98.2	4	1.8
	Rasulpur	158	154	97.5	4	2.5
	Sukinda	103	95	92.2	8	7.8
	TOTAL OF ALL BLOCKS	1562	1505	96.4	57	3.6
Jharsuguda	Jharsuguda	73	66	90.4	7	9.6
	K. Lakhanpur	146	90	61.6	56	38.4
	Kirimira	42	40	95.2	2	4.8
	Kolabira (P)	42	39	92.9	3	7.1
	Laikera	45	42	93.3	3	6.7
	TOTAL OF ALL BLOCKS	348	277	79.6	71	20.4

District	Block	No. of Villages covered under RGGVY	No. of Electrified Villages (RGGVY)	% Villages Electrified	No. of Unelectrified Villages	% Unelectrified Villages	
Kalahandi	Bhawanipatna	268	142	53.0	126	47.0	
	Dharamgarh	72	32	44.4	40	55.6	
	Golamunda	125	68	54.4	57	45.6	
	Jayapatna	91	53	58.2	38	41.8	
	Junagarh	164	71	43.3	93	56.7	
	Kalampur	54	23	42.6	31	57.4	
	Karlamunda	60	48	80.0	12	20.0	
	Kesinga	101	40	39.6	61	60.4	
	Kokasara	70	27	38.6	43	61.4	
	Lanjigarh	423	308	72.8	115	27.2	
	Madanpur-Rampur	246	143	58.1	103	41.9	
	Narala	166	90	54.2	76	45.8	
	Thuamul-Rampur	273	171	62.6	102	37.4	
	TOTAL OF ALL BLOCKS	2113	1216	57.5	897	42.5	
	Kandhamal	Baliguda	237	178	75.1	59	24.9
Chakpad		149	130	87.2	19	12.8	
Daringbadi		270	156	57.8	114	42.2	
G. Udayagiri		78	59	75.6	19	24.4	
Kajamandi Nuagaon		174	124	71.3	50	28.7	
Khajuripada		238	199	83.6	39	16.4	
Kotagarh		141	76	53.9	65	46.1	
Phiringia		394	333	84.5	61	15.5	
Phulabani		210	188	89.5	22	10.5	
Raikia		125	113	90.4	12	9.6	
Tikabali		132	120	90.9	12	9.1	
Tumudibandha		212	153	72.2	59	27.8	
TOTAL OF ALL BLOCKS		2360	1829	77.5	531	22.5	
Kendrapara		Aali	121	107	88.4	14	11.6
		Derabisi	168	168	100.0	0	0.0
	Garadpur	128	128	100.0	0	0.0	
	Kendrapara	124	112	90.3	12	9.7	
	Mahakalapada	185	143	77.3	42	22.7	
	Marsaghai	106	101	95.3	5	4.7	
	Pattamundai	137	134	97.8	3	2.2	
	Rajkanika	152	110	72.4	42	27.6	
	Rajnagar	237	169	71.3	68	28.7	
	TOTAL OF ALL BLOCKS	1358	1172	86.3	186	13.7	
	Kendujhar	Anandapur-I	118	53	44.9	65	55.1
Banspal		146	102	69.9	44	30.1	
Champua		141	90	63.8	51	36.2	
Ghasipura		157	73	46.5	84	53.5	
Ghatgaon		129	85	65.9	44	34.1	
Harichandanpur		194	140	72.2	54	27.8	
Hatadihi		210	103	49.0	107	51.0	
Jhumpura		147	100	68.0	47	32.0	
Joda		110	41	37.3	69	62.7	
Kendujhargarh		211	134	63.5	77	36.5	
Patana		142	77	54.2	65	45.8	
Saharapada		137	86	62.8	51	37.2	
Telkoi		140	111	79.3	29	20.7	
TOTAL OF ALL BLOCKS		1982	1195	60.3	787	39.7	
Khorda		Balianta	91	89	97.8	2	2.2
	Balipatna	87	84	96.6	3	3.4	
	Banapur	195	180	92.3	15	7.7	
	Begunia	159	157	98.7	2	1.3	
	Bhubaneswar	107	97	90.7	10	9.3	
	Bolagad	215	213	99.1	2	0.9	
	Chilika	127	126	99.2	1	0.8	
	Jatani	89	75	84.3	14	15.7	
	Khordha	117	115	98.3	2	1.7	
	Tangi	168	160	95.2	8	4.8	

District	Block	No. of Villages covered under RGGVY	No. of Electrified Villages (RGGVY)	% Villages Electrified	No. of Unelectrified Villages	% Unelectrified Villages
	TOTAL OF ALL BLOCKS	1355	1296	95.6	59	4.4
Koraput	Bandhugaon	146	54	37.0	92	63.0
	Boipariguda	223	112	50.2	111	49.8
	Boriguma	148	65	43.9	83	56.1
	Dasamantapur	165	97	58.8	68	41.2
	Jeypur	113	32	28.3	81	71.7
	Koraput	92	47	51.1	45	48.9
	Kotpad	94	57	60.6	37	39.4
	Kundura	85	45	52.9	40	47.1
	Lakshmipur	103	61	59.2	42	40.8
	Lamtapat	170	140	82.4	30	17.6
	Nandapur	213	165	77.5	48	22.5
	Narayanpatana	123	23	18.7	100	81.3
	Pottangi	100	46	46.0	54	54.0
	Semiliguda	85	55	64.7	30	35.3
	TOTAL OF ALL BLOCKS	1860	999	53.7	861	46.3
Malkangiri	Kalimela	130	105	80.8	25	19.2
	Khairapat	119	67	56.3	52	43.7
	Korkunda	161	145	90.1	16	9.9
	Kudumulgum	264	118	44.7	146	55.3
	Malkangiri	79	79	100.0	0	0.0
	Mathili	133	124	93.2	9	6.8
	Podia	72	68	94.4	4	5.6
	TOTAL OF ALL BLOCKS	958	706	73.7	252	26.3
Mayurbhanj	Bahalda	96	95	99.0	1	1.0
	Bangiriposi	200	177	88.5	23	11.5
	Barsahi	206	171	83.0	35	17.0
	Betanati	214	196	91.6	18	8.4
	Bijatola	135	122	90.4	13	9.6
	Bisoi	146	125	85.6	21	14.4
	Gopabandhunagar	125	112	89.6	13	10.4
	Jamda	78	78	100.0	0	0.0
	Jashipur	215	152	70.7	63	29.3
	Kaptipada	141	129	91.5	12	8.5
	Karanjia	152	120	78.9	32	21.1
	Khunta	122	103	84.4	19	15.6
	Koliana	207	194	93.7	13	6.3
	Kusumi	111	102	91.9	9	8.1
	Muruda	100	99	99.0	1	1.0
	Muruda	163	157	96.3	6	3.7
	Rairangpur	112	104	92.9	8	7.1
	Raruan	102	97	95.1	5	4.9
	Rasagobindapur	157	126	80.3	31	19.7
	Saraskana	184	164	89.1	20	10.9
	Shamakhunta	120	107	89.2	13	10.8
	Sukruli	86	86	100.0	0	0.0
	Suliapada	184	169	91.8	15	8.2
Thakurmunda	167	149	89.2	18	10.8	
Tiring	78	78	100.0	0	0.0	
Udala	86	83	96.5	3	3.5	
	TOTAL OF ALL BLOCKS	3687	3295	89.4	392	10.6
Nabarangapur	Chandahandi	89	58	65.2	31	34.8
	Dabugan	70	68	97.1	2	2.9
	Jharigan	118	107	90.7	11	9.3
	Kosagumuda	121	119	98.3	2	1.7
	Nabarangapur	55	55	100.0	0	0.0
	Nandahandi	52	45	86.5	7	13.5
	Paparahandi	86	85	98.8	1	1.2
	Raighar	117	98	83.8	19	16.2
	Tentulikhunti	83	70	84.3	13	15.7
	Umankote	107	104	97.2	3	2.8

District	Block	No. of Villages covered under RGGVY	No. of Electrified Villages (RGGVY)	% Villages Electrified	No. of Unelectrified Villages	% Unelectrified Villages
	TOTAL OF ALL BLOCKS	898	809	90.1	89	9.9
Nayagarh	Bhapur	111	93	83.8	18	16.2
	Dasapalla	348	259	74.4	89	25.6
	Gania	97	54	55.7	43	44.3
	Khandapada	170	136	80.0	34	20.0
	Nayagarh	144	69	47.9	75	52.1
	Nuagaon	216	157	72.7	59	27.3
	Odagaon	203	135	66.5	68	33.5
	Ranapur	241	132	54.8	109	45.2
	TOTAL OF ALL BLOCKS	1530	1035	67.6	495	32.4
Nuapada	Boden	80	28	35.0	52	65.0
	Khariar	109	29	26.6	80	73.4
	Komana	136	39	28.7	97	71.3
	Nuapada	157	87	55.4	70	44.6
	Sinapali	123	43	35.0	80	65.0
	TOTAL OF ALL BLOCKS	605	226	37.4	379	62.6
Puri	Astaranga	96	67	69.8	29	30.2
	Brahmagiri	153	62	40.5	91	59.5
	Delanga	127	82	64.6	45	35.4
	Gop	202	145	71.8	57	28.2
	Kakatpur	103	88	85.4	15	14.6
	Kanas	128	81	63.3	47	36.7
	Krushnaprasad	98	13	13.3	85	86.7
	Nimapada	237	209	88.2	28	11.8
	Pipili	193	112	58.0	81	42.0
	Puri Sadar	141	72	51.1	69	48.9
	Satyabadi	92	76	82.6	16	17.4
	TOTAL OF ALL BLOCKS	1570	1007	64.1	563	35.9
Rayagada	Bishamakatak	281	237	84.3	44	15.7
	Chandrapur	201	51	25.4	150	74.6
	Gudari	150	85	56.7	65	43.3
	Gunupur	122	110	90.2	12	9.8
	Kalyanasingpur	236	182	77.1	54	22.9
	Kashipur	415	259	62.4	156	37.6
	Kolnara	192	128	66.7	64	33.3
	Muniguda	365	268	73.4	97	26.6
	Padmapur	114	88	77.2	26	22.8
	Ramanguda	112	103	92.0	9	8.0
	Rayagada	276	176	63.8	100	36.2
	TOTAL OF ALL BLOCKS	2464	1687	68.5	777	31.5
Sambalpur	Bamra	136	96	70.6	40	29.4
	Jamankira	234	153	65.4	81	34.6
	Jujomura	124	90	72.6	34	27.4
	Kochinda	130	91	70.0	39	30.0
	Kolabira (P)	5	2	40.0	3	60.0
	Maneswar	101	49	48.5	52	51.5
	Naktideul	173	140	80.9	33	19.1
	Rairakhol	188	172	91.5	16	8.5
	Rengali	67	42	62.7	25	37.3
	Sambalpur (Dhankauda)	81	31	38.3	50	61.7
	TOTAL OF ALL BLOCKS	1239	866	69.9	373	30.1
Sonapur	Binika	99	89	89.9	10	10.1
	Biramaharajpur	181	167	92.3	14	7.7
	Dunguripali	112	106	94.6	6	5.4
	Sonapur	157	123	78.3	34	21.7
	Tarbha	183	146	79.8	37	20.2
	Ulunda	227	211	93.0	16	7.0
	TOTAL OF ALL BLOCKS	959	842	87.8	117	12.2
Sundargarh	Balisankara	99	61	61.6	38	38.4
	Baneigarh	118	88	74.6	30	25.4
	Baragaon	69	47	68.1	22	31.9

District	Block	No. of Villages covered under RGGVY	No. of Electrified Villages (RGGVY)	% Villages Electrified	No. of Unelectrified Villages	% Unelectrified Villages
	Bisra	69	57	82.6	12	17.4
	Gurundia	146	84	57.5	62	42.5
	Hemgir	153	130	85.0	23	15.0
	Koida	107	62	57.9	45	42.1
	Kuanrunda	108	81	75.0	27	25.0
	Kutra	54	54	100.0	0	0.0
	Lahunipara	219	151	68.9	68	31.1
	Lathikata	82	77	93.9	5	6.1
	Lephripara	108	91	84.3	17	15.7
	Nuagaon	120	99	82.5	21	17.5
	Rajagangapur	76	38	50.0	38	50.0
	Subdega	63	48	76.2	15	23.8
	Sundargarh	86	62	72.1	24	27.9
	Tangrapali	81	70	86.4	11	13.6
	TOTAL OF ALL BLOCKS	1758	1300	73.9	458	26.1

Source: Data compiled from RGGVY website²

II. Status of Household Electrification in Orissa:

The Census of India 2011, indicates that close to 64 percent of Orissa rural households continue to depend on Kerosene for lighting.

The table below presents a comprehensive scenario of the sources of lighting in the state, which is as per the Government of India Census, 2011.

Table 3: Sources of Lighting in households of Orissa

District	Total No. of Households	Electricity	Kerosene	Solar energy	Other oil	Any other	No lighting	Electrified		Unelectrified	
								No.	%	No.	%
Bargarh	3,39,364	1,36,817	1,98,851	826	223	286	2,361	1,37,643	41	2,01,721	59
Jharsuguda	83,664	37,112	45,082	200	122	47	1,101	37,312	45	46,352	55
Sambalpur	1,78,958	63,987	1,12,587	366	113	96	1,809	64,353	36	1,14,605	64
Debagarh	70,511	18,487	50,555	240	259	89	881	18,727	27	51,784	73
Sundargarh	3,10,762	79,585	2,23,841	2,197	368	359	4,412	81,782	26	2,28,980	74
Kendujhar	3,49,736	80,481	2,63,466	1,937	625	509	2,718	82,418	24	2,67,318	76
Mayurbhanj	5,44,764	1,07,023	4,31,910	1,526	301	299	3,705	1,08,549	20	4,36,215	80
Baleshwar	4,73,512	2,49,429	2,16,443	1,804	820	821	4,195	2,51,233	53	2,22,279	47
Bhadrak	2,74,191	1,38,080	1,32,319	842	176	251	2,523	1,38,922	51	1,35,269	49
Kendrapara	3,11,465	1,59,811	1,47,154	1,379	337	315	2,469	1,61,190	52	1,50,275	48
Jagatsinghapur	2,37,411	1,21,609	1,12,323	1,045	243	459	1,732	1,22,654	52	1,14,757	48
Cuttack	4,25,082	2,19,784	1,98,234	922	378	307	5,457	2,20,706	52	2,04,376	48
Jajapur	3,78,135	1,69,035	2,01,905	994	517	652	5,032	1,70,029	45	2,08,106	55
Dhenkanal	2,53,118	97,381	1,51,455	434	194	217	3,437	97,815	39	1,55,303	61
Anugul	2,49,585	94,796	1,49,057	902	348	311	4,171	95,698	38	1,53,887	62
Nayagarh	2,13,265	1,11,131	97,230	936	243	306	3,419	1,12,067	53	1,01,198	47
Khordha	2,47,940	1,41,984	1,00,200	512	261	224	4,759	1,42,496	57	1,05,444	43
Puri	3,17,002	1,55,294	1,56,415	803	201	295	3,994	1,56,097	49	1,60,905	51
Ganjam	6,02,216	2,78,201	3,12,092	1,444	652	724	9,103	2,79,645	46	3,22,571	54
Gajapati	1,12,872	50,484	60,598	468	234	102	986	50,952	45	61,920	55
Kandhamal	1,55,335	17,001	1,36,255	743	86	70	1,180	17,744	11	1,37,591	89

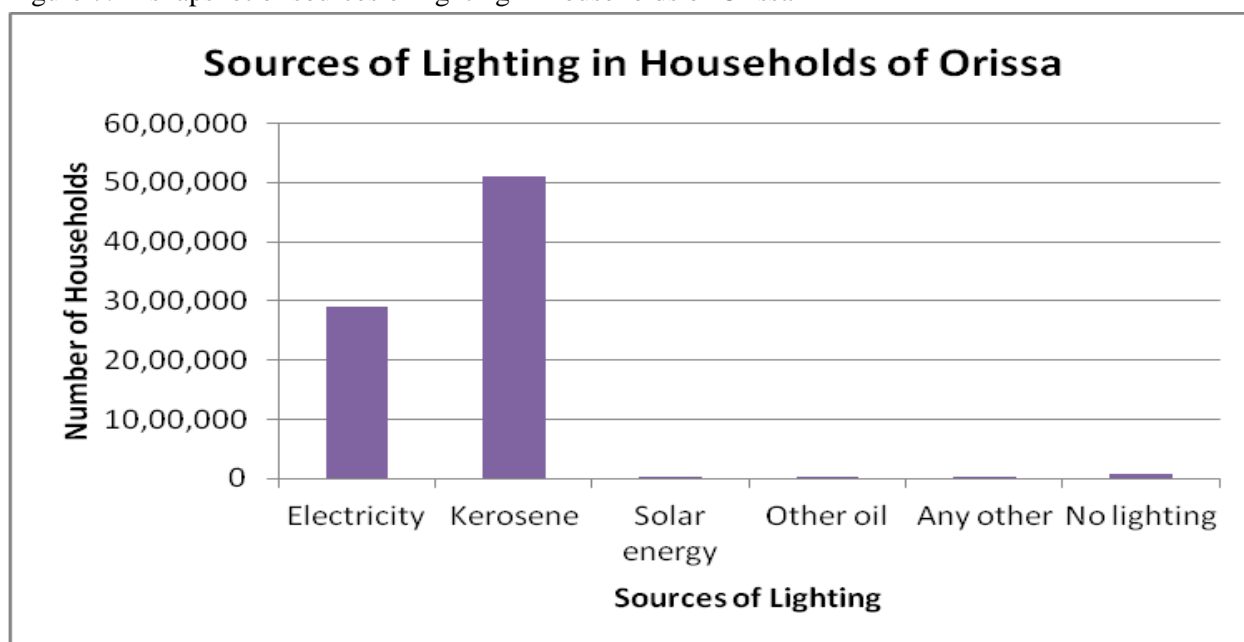
² Rajiv Gandhi Grameen Vidyutikaran Yojana, available at <http://rggv.gov.in/rggv/rggvportal/index.html>

Baudh	1,03,239	15,832	86,173	273	182	72	707	16,105	16	87,134	84
Subarnapur	1,40,714	41,563	97,025	297	133	269	1,427	41,860	30	98,854	70
Balangir	3,87,345	87,948	2,92,681	1,504	351	261	4,600	89,452	23	2,97,893	77
Nuapada	1,51,921	37,851	1,11,626	1,116	88	43	1,197	38,967	26	1,12,954	74
Kalahandi	3,77,001	70,132	2,99,920	3,344	164	311	3,130	73,476	19	3,03,525	81
Rayagada	1,91,615	33,587	1,55,198	847	117	272	1,594	34,434	18	1,57,181	82
Nabarangapur	2,53,461	21,511	2,28,728	1,541	391	464	826	23,052	9	2,30,409	91
Koraput	2,83,522	42,352	2,37,188	1,467	238	97	2,180	43,819	15	2,39,703	85
Malkangiri	1,26,306	16,964	1,07,316	961	99	168	798	17,925	14	1,08,381	86
Total	81,44,012	28,95,252	51,13,827	31,870	8,464	8,696	85,903	29,27,122	36	52,16,890	64

Source: Census of India 2011.

As can be seen from the above table, a number of districts particularly the remote district of Orissa have close to 70-80 percent of un-electrified households, while districts which are in and around the state capital have a relatively lower level of un-electrified households. Although Orissa seems to have a better condition than Jharkhand, Bihar or Uttar Pradesh in terms of electrification but still it's a serious issue.

Figure 7: A snapshot of sources of lighting in households of Orissa



Source: Census of India, 2011

III. Key Sources of Energy for Cooking and Heating in households of Orissa

As is the case with the rest of India, Orissa also has a very poor penetration of clean sources of energy for meeting the cooking and heating requirements of its communities.

On 3.5 percent of Orissa's population has access to modern and relatively clean sources of energy for cooking and heating requirements, mainly LPG, Electricity and bio-gas plants.

So in effect, close to 96.5 percent of its population depend on firewood and other related sources of energy for meeting their cooking and heating requirements.

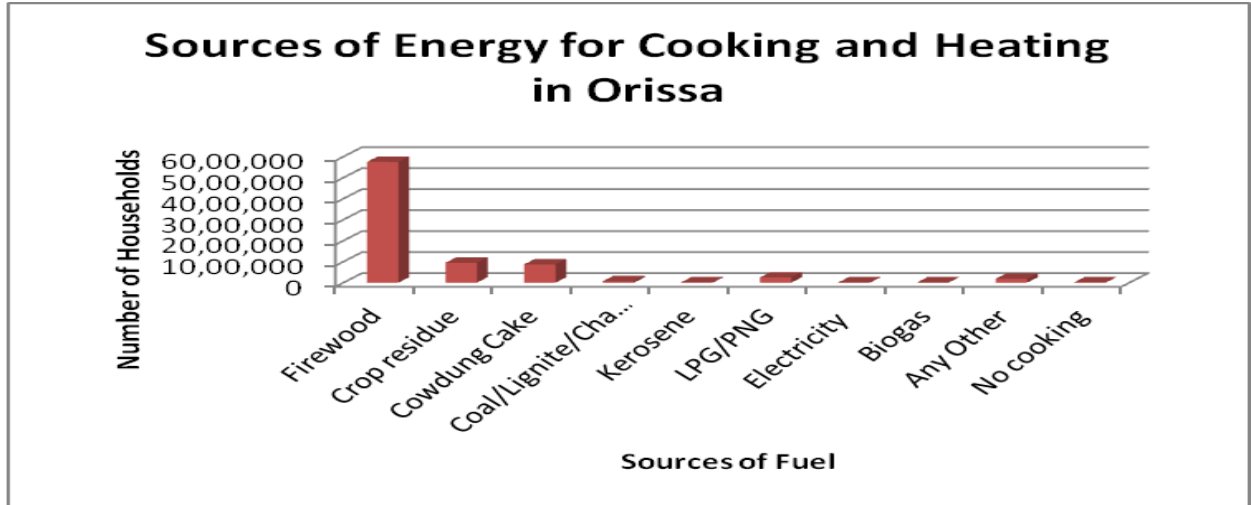
The following table depicts the situation of energy sources for Orissa.

Table 4: Sources of Energy for cooking and heating in households of Orissa

Total No. of HouseHolds	Firewood	Crop residue	Cowdung Cake	Coal/Lignite/Charcoal	Kerosene	LPG/PNG	Electricity	Biogas	Any Other	No cooking
81,44,012	57,50,957	9,49,225	8,70,802	67,431	21,970	2,49,134	16,953	11,631	1,86,205	19,704

Source: Census of India 2011

Figure 2: Sources of Energy for cooking and heating in households of Orissa



Source: Census 2011 data

IV. Status of Assets availability in households of Orissa:

As can be read from the table below almost 64% of the households have access to personal assets and require electricity to operate them.

The table and figure below presents a comprehensive scenario of the assets in rural households in the state, which is as per the Government of India Census, 2011

Table 5: Availability of assets in households of Orissa

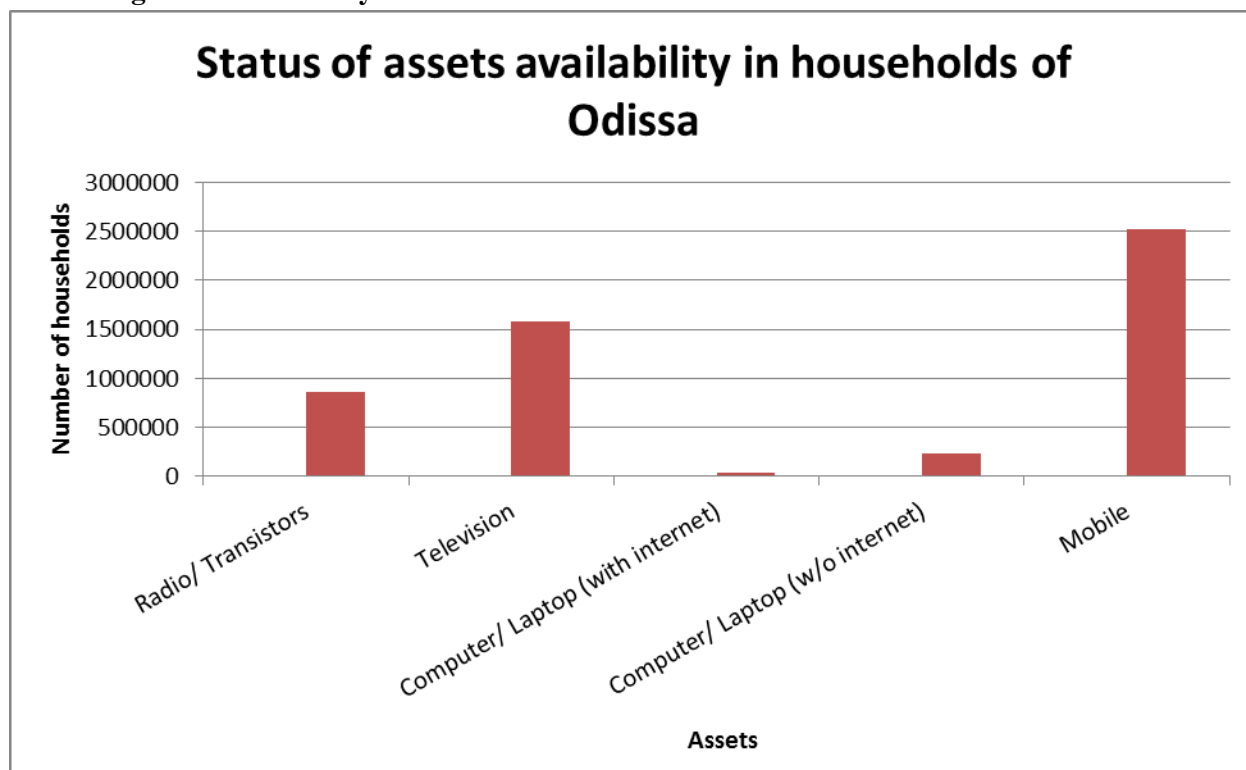
District	Total No. of Households	Radio/Transistors	Television	Computer/ Laptop		Mobile
				With Internet	W/o Internet	
Bargarh	339,364	17,178	83,891	1,071	7,765	94,579
Jharsuguda	83,664	3,953	23,139	363	1,995	28,382
Sambalpur	178,958	12,318	39,809	685	3,668	50,895
Debagarh	70,511	5,513	7,663	675	2,196	14,117
Sundargarh	310,762	29,019	48,045	1,629	8,491	84,502
Kendujhar	349,736	59,630	43,850	913	7,263	93,478
Mayurbhanj	544,764	70,045	56,394	1,382	12,257	126,412
Baleshwar	473,512	37,897	125,547	4,684	16,418	195,513
Bhadrak	274,191	46,473	69,489	1,593	10,662	132,129
Kendrapara	311,465	54,684	87,201	1,326	9,294	152,324

Jagatsinghapur	237,411	44,469	73,474	2,218	8,090	119,303
Cuttack	425,082	57,279	128,136	2,678	12,469	165,971
Jajapur	378,135	46,485	90,529	2,702	12,130	141,427
Dhenkanal	253,118	20,589	50,780	733	6,670	75,281
Anugul	249,585	17,636	47,020	2,357	6,654	71,410
Nayagarh	213,265	13,624	40,650	797	6,100	70,864
Khordha	247,940	31,426	84,933	2,016	7,646	115,081
Puri	317,002	43,469	81,833	1,498	9,276	127,390
Ganjam	602,216	30,589	154,577	2,620	19,215	238,678
Gajapati	112,872	4,538	13,572	287	3,953	21,752
Kandhamal	155,335	22,869	10,100	322	4,734	21,560
Baudh	103,239	10,338	10,534	136	3,011	20,031
Subarnapur	140,714	7,875	25,024	440	3,053	34,665
Balangir	387,345	27,084	55,726	1,301	10,861	87,787
Nuapada	151,921	16,341	17,592	525	3,063	32,106
Kalahandi	377,001	33,621	41,313	974	8,903	71,710
Rayagada	191,615	9,852	19,755	502	5,374	28,408
Nabarangapur	253,461	44,894	13,058	813	5,335	39,829
Koraput	283,522	28,271	22,978	718	8,797	42,221
Malkangiri	126,306	18,238	10,541	259	3,001	18,884
Total	8,144,012	866,197	1,577,153	38,217	228,344	2,516,689

Source: Census of India 2011

The table indicates that maximum households have mobile phones, television and radio/transistors in high numbers. Also as can be read the households are equipped with Computers/Laptops in high numbers.

Figure 3: Availability of assets in households of Orissa



Source: Census 2011 data

V. Status of Electricity Supply in Orissa:

In the 2011-12 Orissa faced a shortage of electricity supply to the tune of 1275 Million units, which translates to a short fall in supply in relation to the demand by 5 percent which has considerably fallen down as compared to last year report. The short fall in electricity supply to meet the peak electricity demand was around 12.6 percent in the same year.

The following table gives an overview of the electricity demand and supply situation of Orissa in the year 2011-12

Table 6: Electricity Demand Vs. Supply Situation in Orissa (2011-12)

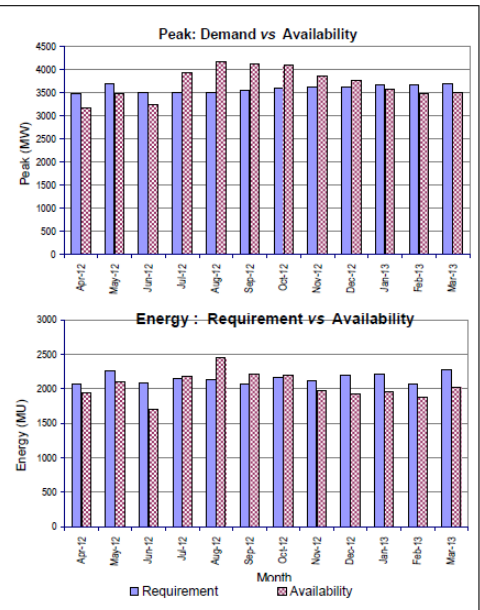
State / Region	Energy				Peak			
	Requirement	Availability	Surplus(+)/Deficit (-)		Requirement	Availability	Surplus(+)/Deficit (-)	
	(MU)	(MU)	(MU)	(%)	(MW)	(MW)	(MW)	(%)
Orissa	25798	24523	-1275	-4.9	3700	4168	468	12.6

Source: Load Generation Balance Report 2012-13, Central Electricity Authority

Further, the assessment of the Central Electricity Authority on the supply versus demand for electricity for the year 2012-2013, indicates that in some months, the gap between supply and demand could be as high as 31 percent, which could potentially mean that the rural electricity supply would be affected even higher than business as usual.

Table 7: Anticipated Power Supply and Demand for Orissa for 2012-2013

Month	Peak				Energy			
	Demand	Availability	Surplus(+)/Deficit (-)		Requirement	Availability	Surplus(+)/Deficit (-)	
	(MW)	(MW)	(MW)	(%)	(MU)	(MU)	(MU)	(%)
Apr-12	3474	3176	-298	-8.6	2074	1944	-130	-6.3
May-12	3692	3486	-206	-5.6	2252	2097	-155	-6.9
Jun-12	3510	3250	-260	-7.4	2088	1704	-384	-18.4
Jul-12	3500	3931	431	12.3	2143	2174	31	1.5
Aug-12	3510	4168	658	18.7	2135	2446	311	14.6
Sep-12	3560	4121	561	15.8	2066	2214	148	7.2
Oct-12	3600	4111	511	14.2	2170	2201	31	1.4
Nov-12	3615	3866	251	6.9	2120	1971	-149	-7.0
Dec-12	3625	3781	156	4.3	2190	1923	-267	-12.2
Jan-13	3680	3584	-96	-2.6	2210	1953	-257	-11.6
Feb-13	3680	3488	-192	-5.2	2070	1873	-197	-9.5
Mar-13	3700	3508	-192	-5.2	2280	2023	-257	-11.3
Annual	3700	4168	468	12.6	25798	24523	-1275	-4.9



Source: Load Generation Balance Report – 2012-13, Central Electricity Authority

